



The Southwest

The Southwest Energy Efficiency Project (SWEEP) prepared this fact sheet to provide an overview of commercial construction activity and total commercial energy consumption in the Southwest. It translates construction statistics and energy data into a visual snapshot of commercial construction activity that is useful for commercial energy efficiency program managers and policymakers.

Size: 633,164 square miles

Population: 20.25 million

2013 Construction Value: \$11.3B¹

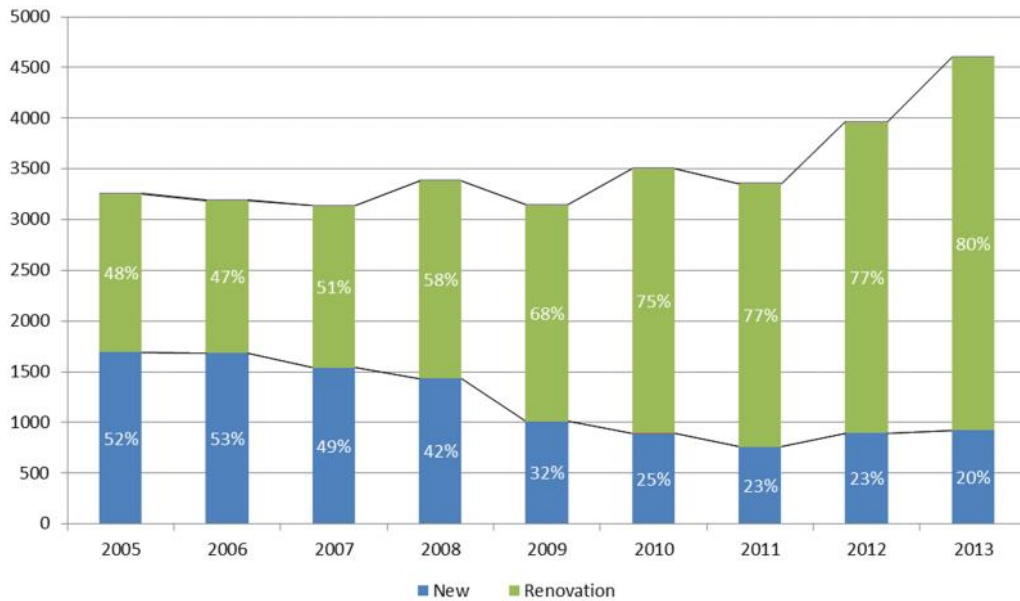
Commercial electricity sales: 96 MMWh²

Average price: 8.7 cents/kWh

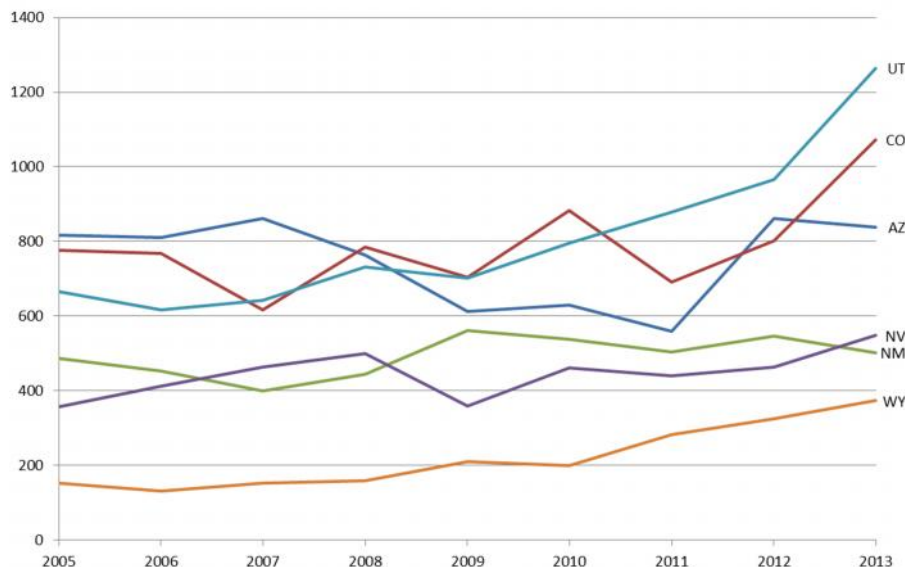
Commercial gas sales: 183 billion cubic feet

Average price: \$7.40/thousand cubic feet

Total New Construction and Renovation Projects, 2005-2013



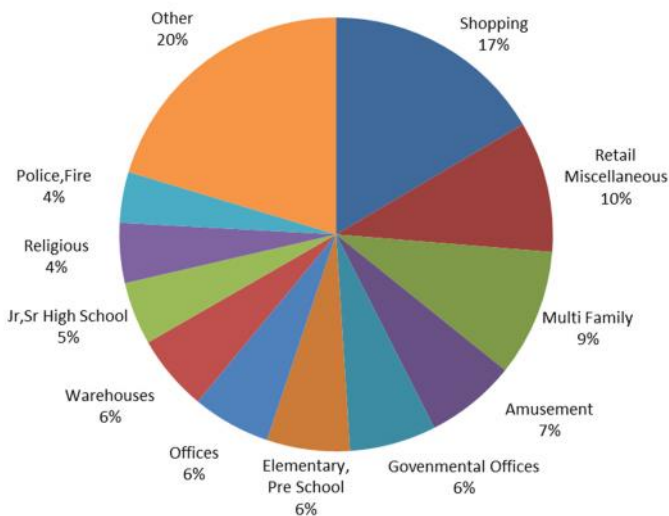
Total Number of Projects by State, 2005-2013



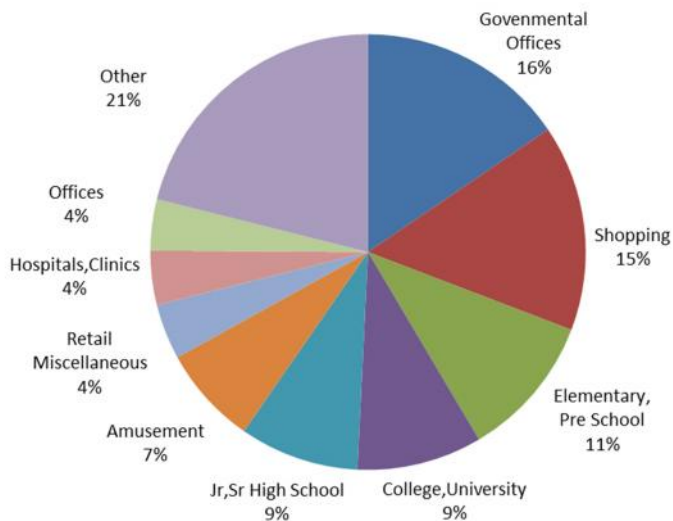
¹ Construction data provided by CMD Construction Data.

² Energy data from U.S. Energy Information Administration (2012).

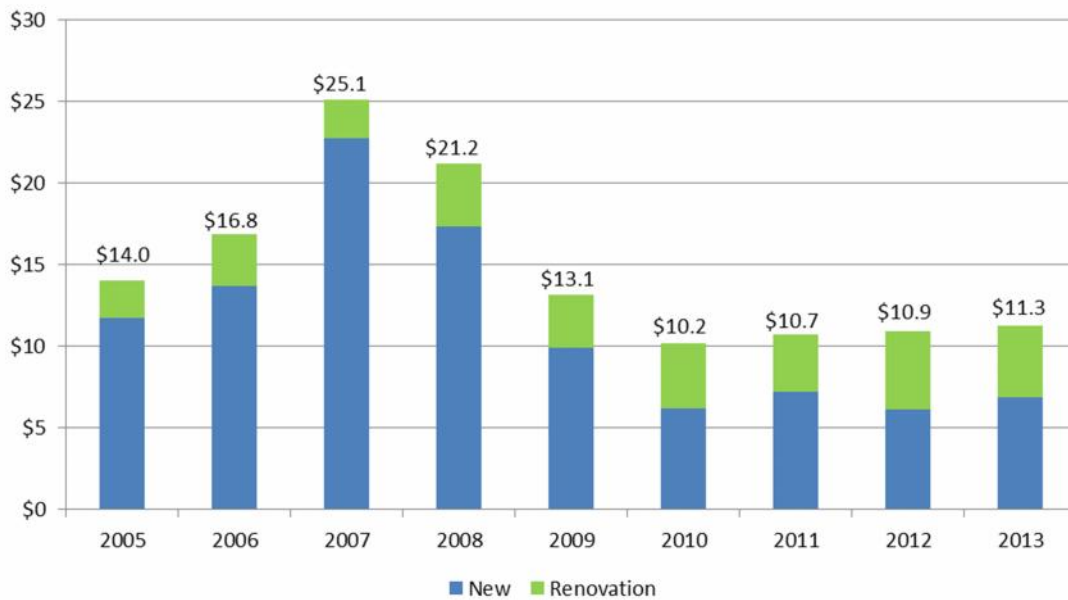
Building Type by Project Starts (New Construction)



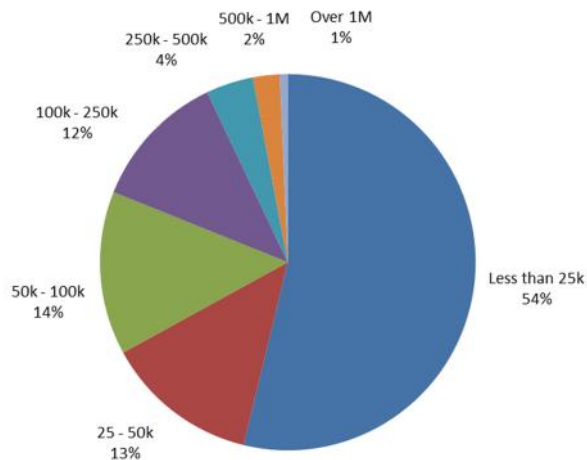
Building Type by Project Starts (Renovations)



Total Construction Cost by Year, 2005-2013 (Billion \$)



Building Size in Square Feet by Number of Projects



Building Type by Total Square Footage Constructed

